

## PUBLIC UTILITIES COMMISSION

505 VAN NESS AVENUE  
SAN FRANCISCO, CA 94102-3298



July 29, 2019

Jeffrey T. Linam, Vice President of Rates & Regulatory  
California-American Water Company  
4701 Beloit Drive  
Sacramento, CA 95838-2434

Dear Mr. Linam,

The Commission has approved California-American Water Company's Advice Letter No. 1244, filed on June 4, 2019, regarding the Rio Plaza Acquisition.

Enclosed are copies of the following revised tariff sheets for the utility's files:

<b>P.U.C. Sheet No.</b>	<b>Title of Sheet</b>
9149-W	Tariff Schedules Applicable to Water Service
9150-W	Schedule No. LA-RP-1 Los Angeles County District - Rio Plaza, General Metered Service
9151-W	Schedule No. CA-4 California American Water, Private Fire Protection Service
9152-W	Schedule No. CA-4 (Continued) California American Water, Private Fire Protection Service
9153-W	Schedule No. CA-4 (Continued) California American Water, Private Fire Protection Service
9154-W	Preliminary Statement, (continued)
9155-W	Preliminary Statement, (continued)
9156-W	Preliminary Statement, Summary Table
9157-W	Los Angeles District Tariff Area, Service Area Map – Index
9158-W	Los Angeles District Tariff Area, Service Area Map - Rio Plaza
9159-W	Table of Contents (continued), (Page 2)
9160-W	Table of Contents, (Page 1)

Please contact Bradley Leong at 415-703-2307, if you have any questions.

Thank you,

/s/ROBIN BRYANT

Robin Bryant  
Water & Sewer Advisory Branch  
Water Division

Enclosures

**CALIFORNIA PUBLIC UTILITIES COMMISSION  
DIVISION OF WATER AND AUDITS**

**Advice Letter Cover Sheet**

<b>Utility Name:</b> California American Water	<b>Date Mailed to Service List:</b> June 4, 2019
<b>District:</b> Los Angeles County District	
<b>CPUC Utility #:</b> U210W	<b>Protest Deadline (20<sup>th</sup> Day):</b> June 24, 2019
<b>Advice Letter #:</b> 1244	<b>Review Deadline (30<sup>th</sup> Day):</b> July 5, 2019
<b>Tier</b> <input checked="" type="checkbox"/> 1 <input type="checkbox"/> 2 <input type="checkbox"/> 3 <input type="checkbox"/> Compliance	<b>Requested Effective Date:</b> June 4, 2019
<b>Authorization</b> D. 19-014-015	
<b>Description:</b> Rio Plaza Acquisition	<b>Rate Impact:</b> \$See AL See AL%

The protest or response deadline for this advice letter is 20 days from the date that this advice letter was mailed to the service list. Please see the "Response or Protest" section in the advice letter for more information.

**Utility Contact:** Kamilah Jones  
**Phone:** 916-568-4232  
**Email:** [Kamilah.jones@amwater.com](mailto:Kamilah.jones@amwater.com)

**Utility Contact:** Jonathan Morse  
**Phone:** 916-568-4237  
**Email:** [Jonathan.morse@amwater.com](mailto:Jonathan.morse@amwater.com)

**DWA Contact:** Tariff Unit  
**Phone:** (415) 703-1133  
**Email:** [Water.Division@cpuc.ca.gov](mailto:Water.Division@cpuc.ca.gov)

**DWA USE ONLY**

<u>DATE</u>	<u>STAFF</u>	<u>COMMENTS</u>
_____	_____	_____
_____	_____	_____

APPROVED

WITHDRAWN

REJECTED

**Signature:** \_\_\_\_\_

**Comments:** \_\_\_\_\_

**Date:** \_\_\_\_\_

\_\_\_\_\_



4701 Beloit Drive  
 Sacramento, CA 95838  
[www.amwater.com](http://www.amwater.com)

P (916)-568-4251  
 F (916) 568-4260

June 4, 2019

ADVICE LETTER NO. 1244

TO THE PUBLIC UTILITIES COMMISSION OF THE STATE OF CALIFORNIA

California-American Water Company (Cal-Am) (U210W) hereby submits for review this advice letter including the following tariff sheets applicable to Cal-Am's Los Angeles District, which are attached hereto:

<u>C.P.U.C. Sheet No.</u>	<u>Title of Sheet</u>	<u>Canceling Sheet No.</u>
9149-W	TARIFF SCHEDULES APPLICABLE TO WATER SERVICE	8507-W
9150-W	Schedule No. LA-RP-1 Los Angeles County District - Rio Plaza GENERAL METERED SERVICE	NEW
9151-W	Schedule No. CA-4 California American Water PRIVATE FIRE PROTECTION SERVICE	9000-W
9152-W	Schedule No. CA-4 (Continued) California American Water PRIVATE FIRE PROTECTION SERVICE	9001-W
9153-W	Schedule No. CA-4 (Continued) California American Water PRIVATE FIRE PROTECTION SERVICE	9002-W
9154-W	PRELIMINARY STATEMENT (continued)	9050-W
9155-W	PRELIMINARY STATEMENT (continued)	NEW
9156-W	PRELIMINARY STATEMENT Summary Table	9124-W
9157-W	Service Area Map Los Angeles District Tariff Area SERVICE AREA MAP – Index	6570-W
9158-W	Service Area Map Los Angeles District Tariff Area SERVICE AREA MAP - Rio Plaza	NEW

9159-W	TABLE OF CONTENTS (continued) (Page 2)	9146-W
9160-W	TABLE OF CONTENTS (Page 1)	9147-W

**BACKGROUND**

Cal-Am filed A.17-12-006 requesting the approval of the sale of Rio Plaza Water Company, Inc. ("Rio Plaza") to Cal-Am. The Commission approved transfer ownership in D.19-04-015. Cal-Am closed the sale on June 4, 2019.

**DISCUSSION**

Submission of this request is made in compliance with Ordering Paragraphs (OP) 4, 5, and OP 13 of D. 19-014-015 which states:

*4. California-American Water Company (Cal-Am) must apply to and obtain a permit from the State Water Resources Control Board (SWRCB) to operate the Rio Plaza Water Company, Inc. (Rio Plaza) water system, and authority for Cal-Am to operate the Rio Plaza water system is conditioned upon Cal-Am's receipt of an operating permit from the SWRCB.*

*5. Within 30 day from receipt of its operating permit, California-American Water Company shall file a Tier 1 Advice Letter to expand its Certificate of Public Convenience and Necessity to include and add the Rio Plaza Water Company, Inc. service area and rates to its tariffs.*

*13. California-American Water Company is authorized to file a Tier 1 Advice Letter to add Rio Plaza Water Company, Inc. to its existing Memorandum Account for Environmental Improvement and Compliance Issues for Acquisitions.*

**REQUEST**

In compliance with OP 4 of D.19-04-015, Cal-Am applied to the SWRCB to obtain a permit to operate the Rio Plaza system. The permit was obtained on May 24, 2019. In compliance with OP 5, this permit is provided as an attachment to this advice letter.

In compliance with OP 5 of D.19-04-015, Cal-Am requests Commission authorization to include and add the Rio Plaza Water Company, Inc. service area and rates to its tariffs. Included with this tariff inclusion is inclusion of Rio Plaza's existing Groundwater Management Memorandum Account. Continuation of this memorandum account is necessary to recover the costs associated with Fox Canyon Groundwater Management Agency (GMA) Ordinance Code restricting the quantities pumped and surcharging production in excess of those amounts or the purchase of in lieu water to avoid the payment of the surcharges.

In compliance with OP 13 of D.19-04-015, Cal-Am requests Commission authorization to add Rio Plaza to the existing Memorandum Account for Environmental Improvement and Compliance Issues with Acquisitions.

**SERVICE LIST**

Pursuant to Section 4.3 of General Order No. 96-B, a copy of this advice letter is being sent to those entities listed in the attached service list. Copies of the detailed workpapers and the documents supporting this Advice Letter have also been furnished to the Commission Staff.

Cal-Am submits this as a Tier 1 advice letter per the decision and requests an effective date of June 4, 2019, the date of closing.

**RESPONSE OR PROTEST**<sup>1</sup>

Anyone may submit a response or protest for this AL. When submitting a response or protest, **please include the utility name and advice letter number in the subject line.**

A **response** supports the filing and may contain information that proves useful to the Commission in evaluating the AL. A **protest** objects to the AL in whole or in part and must set forth the specific grounds on which it is based. These grounds<sup>2</sup> are:

- 1. The utility did not properly serve or give notice of the AL;
- 2. The relief requested in the AL would violate statute or Commission order, or is not authorized by statute or Commission order on which the utility relies;
- 3. The analysis, calculations, or data in the AL contain material error or omissions;
- 4. The relief requested in the AL is pending before the Commission in a formal proceeding; or
- 5. The relief requested in the AL requires consideration in a formal hearing, or is otherwise inappropriate for the AL process; or
- 6. The relief requested in the AL is unjust, unreasonable, or discriminatory, provided that such a protest may not be made where it would require relitigating a prior order of the Commission.

A protest may not rely on policy objections to an AL where the relief requested in the AL follows rules or directions established by statute or Commission order applicable to the utility. A protest shall provide citations or proofs where available to allow staff to properly consider the protest.

Water Division must receive a response or protest via email (**or** postal mail) within 20 days of the date the AL is filed. When submitting a response or protest, **please include the utility name and advice letter number in the subject line.**

The addresses for submitting a response or protest are:

<b>Email Address:</b> <a href="mailto:Water.Division@cpuc.ca.gov">Water.Division@cpuc.ca.gov</a>	<b>Mailing Address:</b> CA Public Utilities Commission Division of Water and Audits 505 Van Ness Avenue San Francisco, CA 94102
---	---

On the same date the response or protest is submitted to the Water Division, the respondent or protestant shall send a copy by mail (or e-mail) to us, addressed to:

<b>Recipients:</b> Kamilah Jones .....	<b>E-Mail:</b> Kamilah.jones@amwater.com.....	<b>Mailing Address:</b> 4701 Beloit Drive
---	--	--

---

<sup>1</sup> G.O. 96-B, General Rule 7.4.1  
<sup>2</sup> G.O. 96-B, General Rule 7.4.2

*Financial Analyst*

Sacramento, CA 95838  
Fax: (916) 568-4260

Sarah E. Leeper.....  
*Vice President – Legal,  
Regulatory*

sarah.leeper@amwater.com .....

555 Montgomery Street,  
Ste. 816  
San Francisco, CA 94111  
Fax: (415) 863-0615

ca.rates.....

ca.rates@amwater.com .....

4701 Beloit Drive  
Sacramento, CA 95838  
Fax: (916) 568-4260

Cities and counties that need Board of Supervisors or Board of Commissioners approval to protest should inform the Water Division, within the 20-day protest period, so that a late filed protest can be entertained. The informing document should include an estimate of the date the proposed protest might be voted on.

**REPLIES**<sup>3</sup>

The utility shall reply to each protest and may reply to any response. Any reply must be received by DWA within five business days after the end of the protest period, and shall be served on the same day on each person who filed the protest or response to the AL.

The actions requested in this advice letter are not now the subject of any formal filings with the California Public Utilities Commission, including a formal complaint, nor action in any court of law.

If you have not received a reply to your protest within 10 business days, contact this person at (916) 568-4232.

This filing will not cause the withdrawal of service, nor conflict with other schedules or rules.

CALIFORNIA-AMERICAN WATER COMPANY

*/s/ Kamilah Jones*

\_\_\_\_\_  
Kamilah Jones  
Financial Analyst IIB

<sup>3</sup> G.O. 96-B, General Rule 7.4.3

TITLE  
TARIFF SCHEDULES  
Applicable to WATER SERVICE

Sheet 1

Together with Information Affecting

**RATES AND SERVICE**  
Of  
**CALIFORNIA-AMERICAN WATER COMPANY**

655 West Broadway, #1410

San Diego, CA 92101

Telephone Number: 619-446-4760

Internet Address: <http://www.calamwater.com>

Operating In or Near

Coronado, Imperial Beach, and San Diego County; Baldwin Hill, Bradbury, Duarte, Irwindale, Ladera Heights, Monrovia, Rosemead, San Gabriel, San Marino, Temple City, Windsor Hills, and Viewpark, Adams Ranch, Los Angeles County; El Rio, City of Oxnard, Ventura County; Carmel-by-the Sea, Carmel Valley, Monterey, Pacific Grove, Seaside, Del Rey Oaks, Sand City, Hidden Hills, Ryan Ranch, Bishop, Laguna Seca, Ambler Park, Oaks, Rim Rock, Rancho El Toro, Salina, Ralph Lane, Chualar, Toro, Garrapata, Monterey County; Thousand Oaks and Camarillo, Newbury Park, Ventura County; Larkfield, Fulton, San Rosa and Sonoma County; Cordova, Rosemont, Parkway Estates, Lindale, Foothill Farms, Arlington Heights, Arden Highlands, Arden Estates and Security Park, City of Citrus Heights, Antelope and Sabre City, Sacramento and Placer County; Dunnigan in Yolo County; Geyserville in Sonoma County; Meadowbrook in Merced County; City of Isleton, Walnut Grove, Morgan Creek, Doyle Ranch, Sun Valley and Riolo Greens.

(T)  
(T)

The following tariff schedules embracing Rates and Rules have been regularly filed with the Public Utilities Commission of the State of California and are the effective rates and rules of this Utility.

No officer, inspector, solicitor, agent or employee of the Utility has any authority to waive, alter or amend these tariff schedules or any part thereof in any respect.

(Continued)

(TO BE INSERTED BY UTILITY)

ISSUED BY

(TO BE INSERTED BY C.P.U.C.)

Advice 1244

J. T. LINAM

Date Filed 06/04/2019

Decision

DIRECTOR - Rates & Regulatory

Effective 06/04/2019

Resolution \_\_\_\_\_

655 W. Broadway, Suite 1410

San Diego, CA 92101

Schedule No. LA-RP-1  
 Los Angeles County District - Rio Plaza  
GENERAL METERED SERVICE

Sheet 1

APPLICABILITY

Applicable to all metered water service.

TERRITORY

Rio Plaza Subdivision and vicinity located northeast of El Rio section of the City of Oxnard, Ventura County.

RATES

Quantity Rates:

	<u>Base Rate</u> <u>Per CCF</u>	<u>Base Rate</u> <u>Per 100 Gal</u>
For the first (6 CCF) 45 CGL	\$1.45	\$0.1938
For the next (6 CCF) 45 CGL	\$2.35	\$0.3141
For all water delivered over (12 CCF) 90 CGL	\$3.36	\$0.4492

Service charge: General Metered:

	<u>Per Meter</u> <u>Per Month</u>
For 3/4-inch meter	\$29.87
For 1-inch meter	\$49.80
For 1-1/2-inch meter	\$99.57
For 2-inch meter	\$159.37
For 3-inch meter	\$298.76
For 4-inch meter	\$497.93

The Meter Charge is a readiness-to-serve charge which is applicable to all metered service and to which is added the charge for water used computed at the Quantity Rate.

SPECIAL CONDITIONS

Fees and Surcharges:

1. All bills are subject to the reimbursement fee set forth in Schedule No UF.
2. In accordance with Section 2714 of the Public Utilities Code, if a tenant in a rental unit leaves owing the company, service to subsequent tenants on the unit will, at the company's option, be furnished on the account of the landlord or property owner.
2. As authorized by the California Public Utilities Commission all bills are subject to a 12-month surcharge of \$2.77 per month offsetting Fox Canyon Groundwater Management Agency pumping fee for exceeding the groundwater allocation for 2017 a total of \$17,313.

(Continued)

(TO BE INSERTED BY UTILITY)

Advice 1244  
 Decision

ISSUED BY

J. T. LINAM  
 DIRECTOR - Rates & Regulatory

(TO BE INSERTED BY C.P.U.C.)

Date Filed 06/04/2019  
 Effective 06/04/2019  
 Resolution \_\_\_\_\_

(N)

(N)



Schedule No. CA-4  
California American Water  
PRIVATE FIRE PROTECTION SERVICE

Sheet 1

APPLICABILITY

Applicable to all water service furnished for privately owned fire protection system.

TERRITORY

All territories served by California American Water Company

RATES

	<u>Per Month</u>	
<u>Larkfield District</u>		
For each 1 1/2-inch connection or smaller	\$25.74	
For each 4-inch connection or smaller	\$31.04	
For each 6-inch connection	\$50.60	
For each 8-inch connection	\$70.64	
For each 10-inch connection	\$91.37	
 <u>Los Angeles District</u>		
For each 4-inch connection or smaller	\$42.11	
For each 6-inch connection	\$67.19	
For each 8-inch connection	\$92.76	
For each 10-inch connection	\$119.03	
For each 12-inch connection	\$155.99	
 <u>Los Angeles District – Rio Plaza System</u>		
For each 1-inch connection or smaller	\$15.06	(N)
For each 1 1/2-inch connection or smaller	\$22.59	
For each 4-inch connection or smaller	\$60.24	
For each 6-inch connection	\$90.36	
For each 8-inch connection	\$120.48	
For each 10-inch connection	\$150.60	
 <u>Monterey County District</u>		
For each 1-inch connection or smaller	\$25.33	(N)
For each 1 1/2-inch connection or smaller	\$27.86	(L)
For each 2-inch connection or smaller	\$30.39	
For each 3-inch connection or smaller	\$35.45	
For each 4-inch connection or smaller	\$40.51	
For each 6-inch connection	\$75.38	
For each 8-inch connection	\$113.87	
For each 10-inch connection	\$156.13	
		(L)

(Continued)

(TO BE INSERTED BY UTILITY)

Advice 1244  
Decision

ISSUED BY

J. T. LINAM  
DIRECTOR - Rates & Regulatory

(TO BE INSERTED BY C.P.U.C.)

Date Filed 06/04/2019  
Effective 06/04/2019  
Resolution \_\_\_\_\_

Schedule No. CA-4 (Continued)  
 California American Water  
PRIVATE FIRE PROTECTION SERVICE

Sheet 2

RATES: (continued)

	<u>Per Month</u>	(L)
<u>Sacramento District</u>		
For each 4-inch connection or smaller	\$58.01	
For each 6-inch connection	\$97.30	
For each 8-inch connection	\$138.08	
For each 10-inch connection	\$174.38	
For each 12-inch connection	\$248.09	
<u>Sacramento District - Meadowbrook System</u>		
For each 4-inch connection or smaller	\$14.80	
For each 6-inch connection	\$22.20	
For each 8-inch connection	\$29.58	
<u>San Diego District</u>		
For each 4-inch connection or smaller	\$32.54	
For each 6-inch connection	\$60.13	
For each 8-inch connection	\$87.10	
For each 10-inch connection	\$120.97	
For each 12-inch connection	\$172.83	
<u>Ventura District</u>		
For each 4-inch connection or smaller	\$39.14	
For each 6-inch connection	\$62.74	
For each 8-inch connection	\$86.82	
For each 10-inch connection	\$111.61	
For each 12-inch connection	\$147.09	

(L)

(Continued)

(TO BE INSERTED BY UTILITY)

ISSUED BY

(TO BE INSERTED BY C.P.U.C.)

Advice 1244

J. T. LINAM

Date Filed 06/04/2019

Decision

DIRECTOR - Rates & Regulatory

Effective 06/04/2019

Resolution

Schedule No. CA-4 (Continued)  
California American Water  
PRIVATE FIRE PROTECTION SERVICE

Sheet 5

SPECIAL CONDITIONS APPLICABLE TO SAN DIEGO DISTRICT

- 1. A Surcharge is included on each bill to collect franchise taxes and/or business license fees paid to various municipalities. The amount collected is based on a percentage of gross revenues of each bill. The percentage is 2% to City of San Diego and the City of Imperial Beach.

SPECIAL CONDITIONS APPLICABLE TO VENTURA DISTRICT

- 1. A surcharge is included on each bill to collect franchise taxes and/or business license fees paid to various municipalities. The amount collected is 2.0% based on gross revenues before taxes and PUC fees for the County of Ventura and the City of Thousand Oaks.

SPECIAL CONDITIONS APPLICABLE TO LOS ANGELES COUNTY DISTRICT

- 1. A surcharge is included on each bill to collect franchise taxes and/or business license fees paid to various municipalities. The amount collected is based on a percentage of the gross revenues of each bill. The percentages are as follows: City of San Marino 2.00%; City of San Gabriel 2.001%; City of Rosemead 1.183%; County of Los Angeles 2.00%; City of Duarte 2.00%; and City of Bradbury 1.959%. Franchise taxes in the Baldwin Hills District are 2.00% per customer on a monthly basis.

SPECIAL CONDITIONS APPLICABLE TO LARKFIELD DISTRICT

- 1. A surcharge is included on each bill to collect franchise fees and/or business license fees paid to the County of Sonoma. The amount collected is based on a percentage of the gross revenues of each bill. The percentage is as follows: Larkfield Franchise Fee – 2.00%

SPECIAL CONDITIONS APPLICABLE TO RIO PLAZA DISTRICT

- 1. As authorized by the California Public Utilities Commission all bills are subject to a 12-month surcharge of \$2.77 per month offsetting Fox Canyon Groundwater Management Agency pumping fee for exceeding the groundwater allocation for 2017 a total of \$17,313.

(N)  
|  
(N)

(Continued)

(TO BE INSERTED BY UTILITY)	ISSUED BY	(TO BE INSERTED BY C.P.U.C.)
Advice 1244	J. T. LINAM	Date Filed <u>06/04/2019</u>
Decision	DIRECTOR - Rates & Regulatory	Effective <u>06/04/2019</u>
		Resolution _____

PRELIMINARY STATEMENT  
(Continued)

Sheet 47

**AM. The Memorandum Account for Environmental Improvements and Compliance Issues for Acquisitions.**

**1. PURPOSE:**

The purpose of the account is to track costs associated with required improvements related to environmental and compliance issues in the Dunnigan, Geyserville, Meadowbrook and Rio Plaza service territories. Example of such costs include, but are not limited to, nitrate mitigation, installation of geosynthetic liners, repair of a cracked surface seal on the main well, construction of a back-up well and back-up electrical power source to maintain minimum pressure in the event of failure in grid power. This account excluded costs related to hexavalent chromium mitigation since there is a separate memorandum account for those costs.

**2. APPLICABILITY:**

California American Water's Sacramento District – Dunnigan, Geyserville, and Meadowbrook Service Areas; Los Angeles County District – El Rio, City of Oxnard, Ventura County

(T)  
(T)

**3. ACCOUNTING PROCEDURE:**

- a. A debit entry will be created to capture costs associated with the account.
- b. A debit or credit entry equal to interest on the balance in the account at the beginning of the month and half the balance after the above entries, at a rate equal to one-twelfth of the rate on 90 day non-financial Commercial Paper, as reported in the Federal Reserve Statistical Release, H.15 or its successor.
- c. A credit entry will be made to transfer the balances to the appropriate district Consolidated Expense Balancing Account's (CEBA) upon Commission approval.

**4. RATEMAKING PROCEDURE:**

There is currently no ratemaking component to the memorandum account. Requests for recovery of any balance are to be processed according to General Order 96-B and Standard Practices or otherwise determined in a Commission decision. Upon Commission review and approval, balances shall be transferred to the appropriate District CEBA's for recovery/fund.

(Continued)

(TO BE INSERTED BY UTILITY)  
Advice 1244  
Decision

ISSUED BY  
J. T. LINAM  
DIRECTOR - Rates & Regulatory

(TO BE INSERTED BY C.P.U.C.)  
Date Filed 06/04/2019  
Effective 06/04/2019  
Resolution \_\_\_\_\_

PRELIMINARY STATEMENT  
(Continued)

Sheet 78

BB. Groundwater Management Memorandum Account

(N)

1. **PURPOSE:** The purpose of this memorandum account is to recover the cost associated with Fox Canyon Groundwater Management Agency (GMA) Ordinance Code restricting the quantities pumped and surcharging production in excess of those amounts or the purchase of in lieu water to avoid the payment of the surcharges. The authority to establish this account was granted by Commission Decision No 94-06-033, June 22, 1994.
2. **APPLICABILITY:** Applicable to Rio Plaza, California American Water (Cal-Am).
3. **ACCOUNTING PROCEDURE:**  
  
Cal-Am may maintain a memorandum account for its expenses and other recovery/reimbursements in connection with the GMA Ordinance Code. These expenses must be additional or incremental to those allowed in Cal-Am last general rate case proceeding. Cal-Am shall make entries to this account at the end of each month as follows:
  - a. Debit entries equal to the incremental or additional amounts recorded in Cal-Am administrative and general expense accounts that were incurred as a result of the exceeding their production under the terms of the GMA Ordinance Code.
  - b. Credit or Debit entries equal to the average balances in the memorandum account in accordance with the 90-day commercial paper rate.
  - c. Credit entries equal to the proceeds received by Cal-Am from customer billings authorized by the Commission.

In addition, the water utility shall file an advice letter to the Commission detailing the charges to this account for cost recovery from the customers. Recovery of a memorandum account requires full justification of all expenses and a recorded earnings test for the calendar period during which the expense was incurred. Recovery of memorandum accounts should be spread across all utility service that have benefitted from the actions that resulted from the money spent and booked to the memorandum account.

(N)

(Continued)

(TO BE INSERTED BY UTILITY)  
Advice 1244  
Decision

ISSUED BY  
J. T. LINAM  
DIRECTOR - Rates & Regulatory

(TO BE INSERTED BY C.P.U.C.)  
Date Filed 06/04/2019  
Effective 06/04/2019  
Resolution \_\_\_\_\_

PRELIMINARY STATEMENT  
Summary Table

Sheet 2

Reference	Account	Tariff
AC	Water Cost of Capital Adjustment Mechanism	9036-W
AD	Water Contamination Litigation Expense Memorandum Account	9037-W
AE	West Placer Memorandum Account	9038-W
AF	Water Revenue Adjustment Mechanism (WRAM) & Modified Cost Balancing Account (MCBA)	9039-W,9040-W,9041-W, 9042-W
AG	Leak Adjustments Memorandum Account (LAMA)	9043-W
AH	Low Income Customer Data Sharing Memorandum Account	9044-W
AI	Operational Energy Efficiency Program Memorandum Account (OEEPMA)	9045-W, 9046-W
AJ	Purchased Water, Purchased Power, & Pump Tax Balancing Account	9047-W
AK	Temporary Interest Rate Balancing Account (TIRBA)	9048-W
AL	School Lead Testing Memorandum Account	9049-W
AM	The Memorandum Account for Environmental Improvement and Compliance Issues for Acquisitions	9154-W
AN	Dunnigan Consulting Memorandum Account	9051-W
AO	Water-Energy Nexus Program Memorandum Account	9052-W
AP	PCWA SFF Memorandum Account	9053-W
AQ	Monterey District Pre-2015 Residential Water Revenue Adjustment Mechanism/Modified Cost Balancing Account ("WRAM/MCBA") undercollection/recovery Balancing Account	9054-W
AR	Monterey District Pre-2015 Residential Water Revenue Adjustment Mechanism/Modified Cost Balancing Account ("WRAM/MCBA") undercollection/recovery Balancing Account	9055-W
AS	Tax Cuts and Jobs Act Memorandum Account	9056-W
AT	General Rate Case Interim Rate True-up Memorandum Account	9057-W
AU	Cost of Capital Memorandum Account	9058-W
AV	Monterey County District Leak Adjustment Balancing Account	9059-W
AW	Tax Accounting Memorandum Account (TMA)	9060-W
AX	MPWSP Phase 1 Project Cost Memorandum Account (PCMA)	XXXX-W
AY	MPWSP Construction Fund Charge Memorandum Account (CFMA)	XXXX-W
AZ	MPWSP Operations and Maintenance Memorandum Account (MOMMA)	XXXX-W
BA	Credit Card Memorandum Account	9125-W
BB	Groundwater Management Memorandum Account	9155-W

(C)

(N)

(Continued)

(TO BE INSERTED BY UTILITY)		ISSUED BY	(TO BE INSERTED BY C.P.U.C.)	
Advice	1244	J. T. LINAM	Date Filed	<u>06/04/2019</u>
Decision		DIRECTOR - Rates & Regulatory	Effective	<u>06/04/2019</u>
			Resolution	

**CALIFORNIA-AMERICAN WATER COMPANY**

655 W. Broadway, Suite 1410

San Diego, CA 92101

Cancelling

Revised  
Original

Cal. P.U.C. Sheet No.  
Cal. P.U.C. Sheet No.

9157-W  
6570-W

---

Los Angeles District Tariff Area

Sheet 1

(See Attached – Los Angeles County District Tariff Area – Index)

(Continued)

---

(TO BE INSERTED BY UTILITY)

Advice 1244

Decision

ISSUED BY

J. T. LINAM

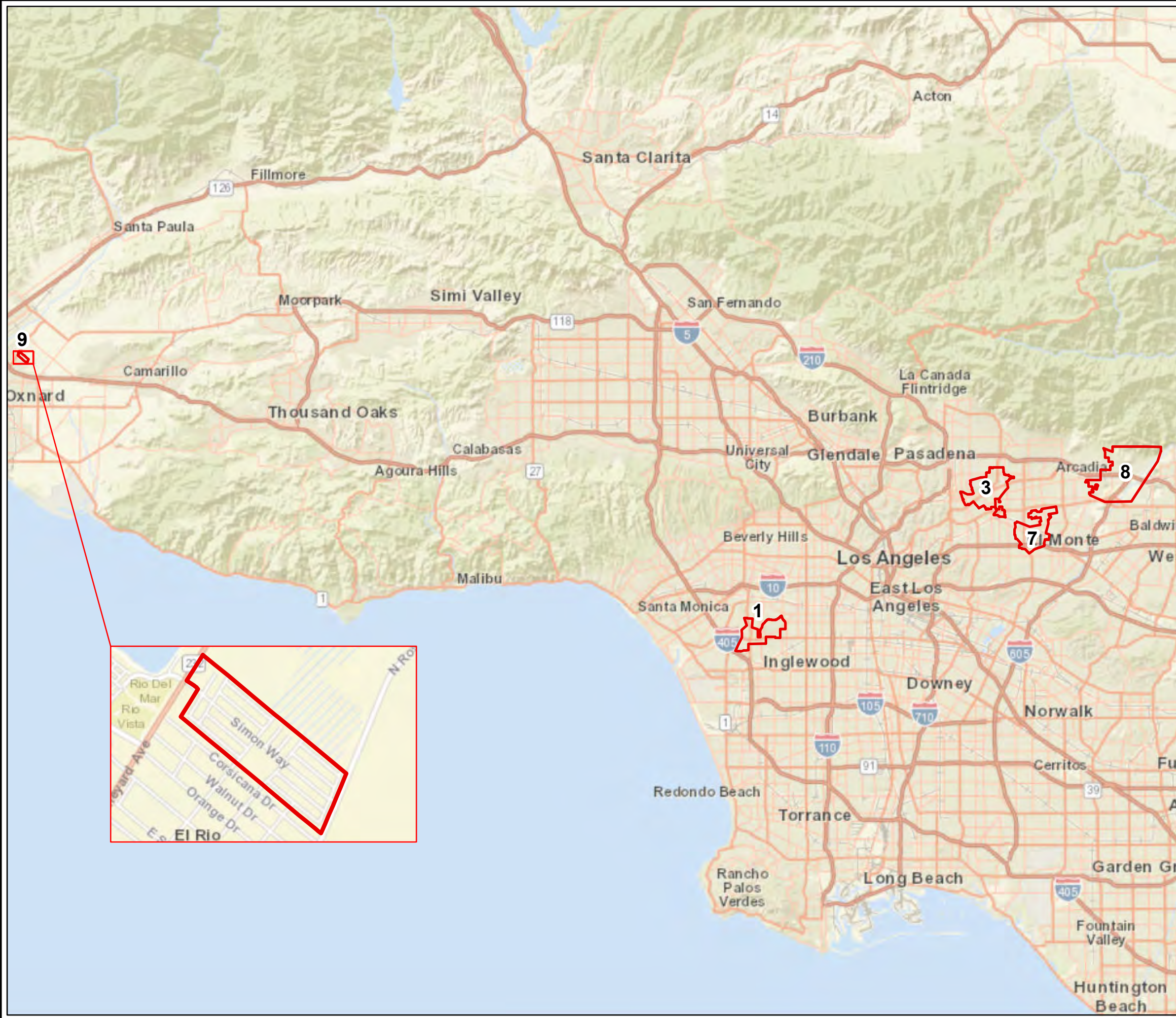
DIRECTOR - Rates & Regulatory

(TO BE INSERTED BY C.P.U.C.)

Date Filed 06/04/2019


Effective 06/04/2019

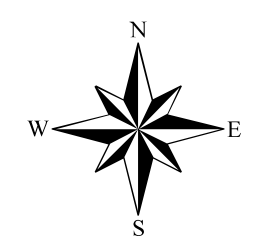
Resolution \_\_\_\_\_



SERVICE AREA	PAGE
BALDWIN HILLS	1
LOW PRESS. ZONE 996	2
SAN MARINO UPPER	3
LOW PRESS. ZONE 935	4
LOW PRESS. ZONE 936	5
LOW PRESS. ZONE 937	6
SAN MARINO LOWER	7
DUARTE	8
RIO PLAZA	9

**Legend**

 Service Area Boundary



**SERVICE AREA MAP  
LOS ANGELES  
COUNTY DISTRICT  
INDEX**



---

Los Angeles District Tariff Area - Rio Plaza

Sheet 9

**(See Attached)**

(Continued)

---

(TO BE INSERTED BY UTILITY)

Advice 1244

Decision

ISSUED BY

J. T. LINAM

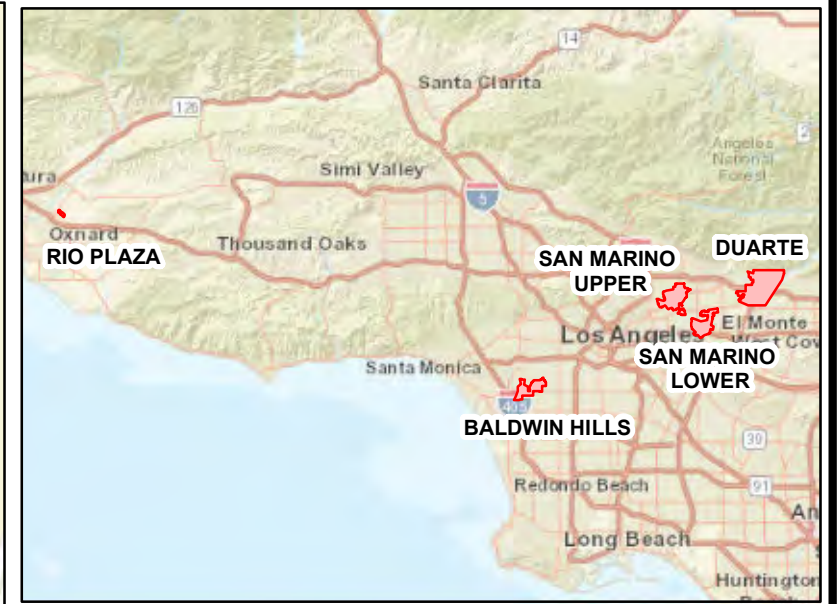
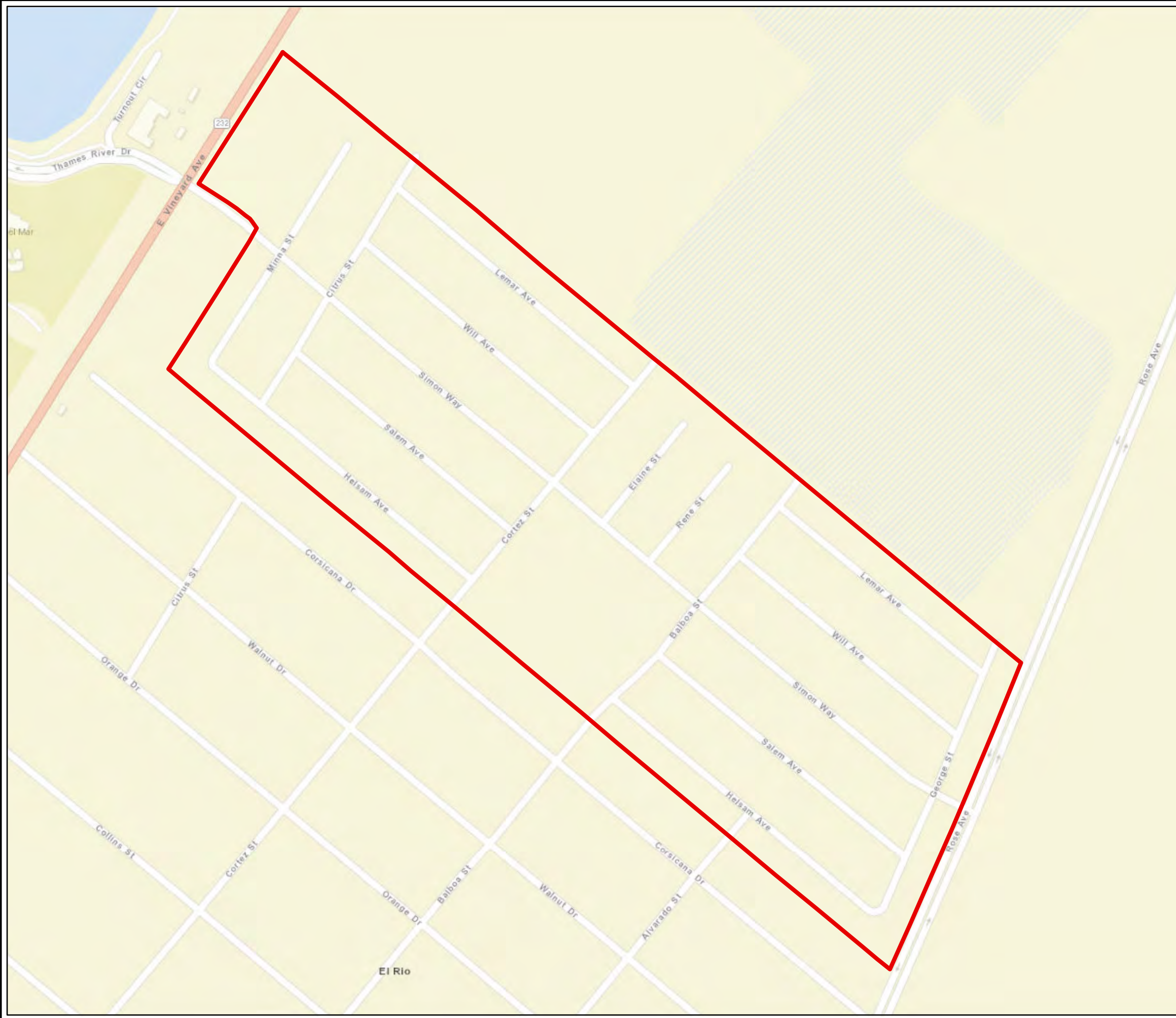
DIRECTOR - Rates & Regulatory

(TO BE INSERTED BY C.P.U.C.)

Date Filed 06/04/2019

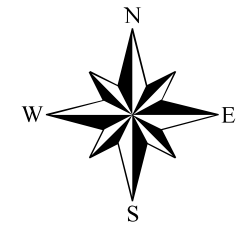
Effective 06/04/2019

Resolution \_\_\_\_\_



**Legend**

 Service Area Boundary



**SERVICE AREA MAP  
LOS ANGELES  
COUNTY DISTRICT  
RIO PLAZA**

TABLE OF CONTENTS

Sheet 2

<u>SUBJECT MATTER OF SHEET</u>	<u>C.P.U.C. SHEET NO.</u>
<u>SERVICE AREA MAP (Continued):</u>	
Sacramento	8511-W, 6592-W, 6593-W, 8664-W, 6595-W, 8872-W, 7500-W, 8794-W, 6599-W, 6600-W
Sacramento- Dunnigan	8163-W
Sacramento- Geyserville	8321-W
Sacramento - Meadowbrook	8512-W
San Diego County	6601-W, 6602-W
Ventura County	6603-W, 6604-W
<u>RATE SCHEDULES:</u>	
All Districts -- Low Income Ratepayer Assistance Program	
CA-LIRA	California American Water Low Income Ratepayer Assistance Program
	9090-W, 9113-W, 9114-W, 9099-W, 9100-W, 9127-W, 7724-W, 7725-W, 7726-W
CA-4	California American Water Private Fire Protection Service
	9151-W, 9152-W, 7739-W, 7740-W, (C) 9153-W, 8001-W, 8020-W, 8021-W, (C) 7628-W, 7625-W, 7636-W, 7640-W, 7643-W, 7632-W, 7634-W, 8206-W
CA-4H	Private Fire Hydrant Service
	9112-W, 7743-W, 7744-W, 8247-W, 8002-W
Larkfield District	
LK-F	Facilities Fees
	7651-W
Los Angeles County District	
LA-1	General Metered Service
	9095-W, 9096-W, 9097-W, 8980-W, 9130-W, 8016-W, 7630-W
LA-3M	Measured Irrigation Service
LA-RP-1	General Metered Service
	9098-W, 8983, 8984-W, 9131-W 9150-W (N)
Monterey County District <i>(Monterey Main, Hidden Hills, Ryan Ranch, &amp; Bishop Service Areas)</i>	
MO-1-SF	General Metered Service Single Family Residential Customers
	9138-W, 9139-W, 8944-W, 8945-W, 9118-W, 8947-W, 8948-W, 8399-W, 8888-W, 8023-W,
MO-1-MF	General Metered Service Multi-Residential Customers
	9140-W, 9141-W, 8951-W, 8952-W, 9119-W, 8954-W, 8955-W
MO-1C	General Metered Service Non-Residential Customers
	9142-W, 8957-W, 8958-W, 8959-W, 8960-W, 8961-W, 9120-W, 8963-W, 8964-W,
MO-1O	General Metered Service Other Customers
	9143-W, 9144-W, 8967-W, 8968-W, 9121-W, 8970-W, 8971-W

(Continued)

(TO BE INSERTED BY UTILITY)	ISSUED BY	(TO BE INSERTED BY C.P.U.C.)
Advice 1244	J. T. LINAM	Date Filed <u>06/04/2019</u>
Decision	DIRECTOR - Rates & Regulatory	Effective <u>06/04/2019</u>
		Resolution _____

